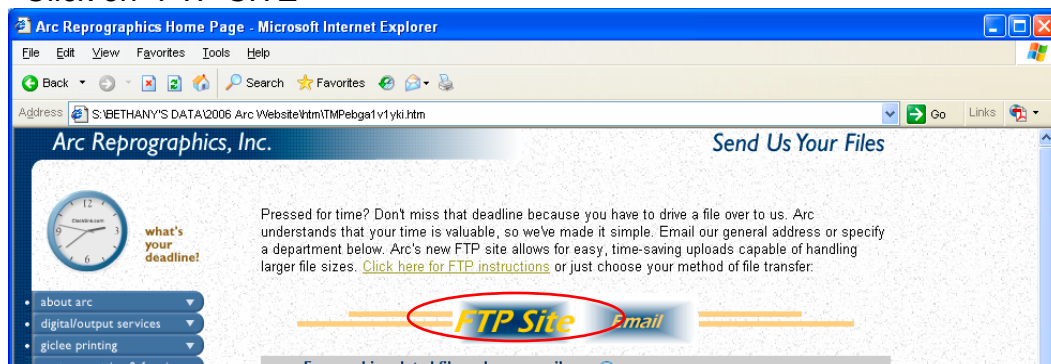


Download and install the correct printer driver from our website:

- 1) logon to www.arcpro.com
- 2) Select "Send us your files" from the "File Transfer and Management" menu



- 3) Click on "FTP SITE"



- 4) Click on "View Folders"

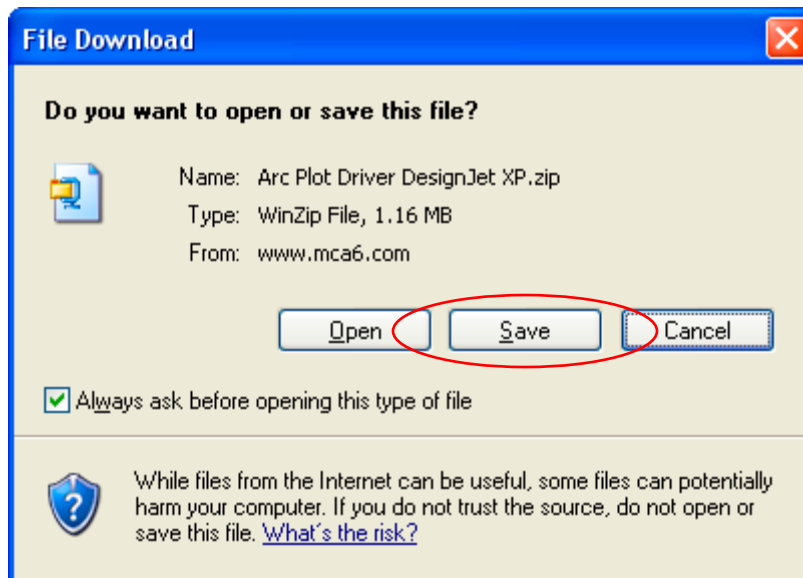
ARC REPROGRAPHICS, INC.

File Transfer Site

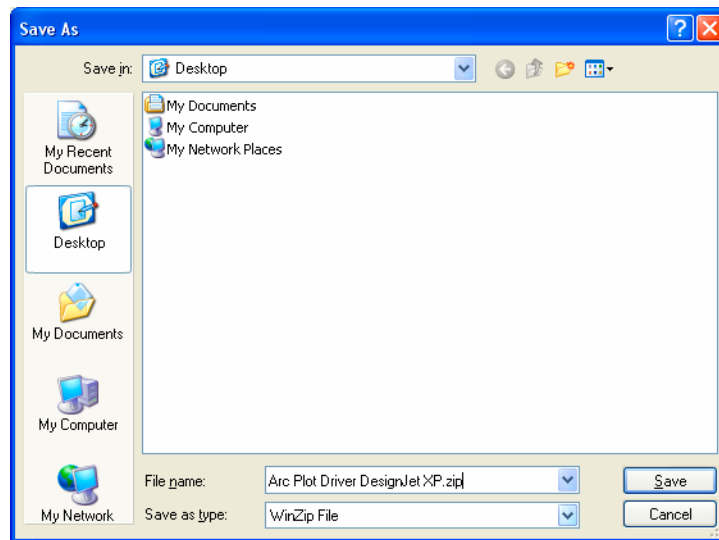
[\[Upload files\]](#) [\[View Folders\]](#)

- 5) Click on "[download/](#)"
- 6) Click on "[HP Drivers/](#)"
- 7) Click on "[Arc Plot Driver Desi..>](#)"

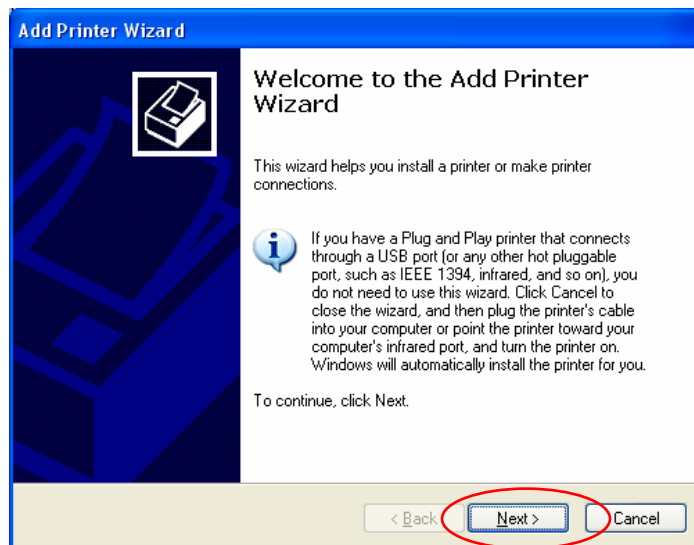
- 8) When download window pops up click on "Save"



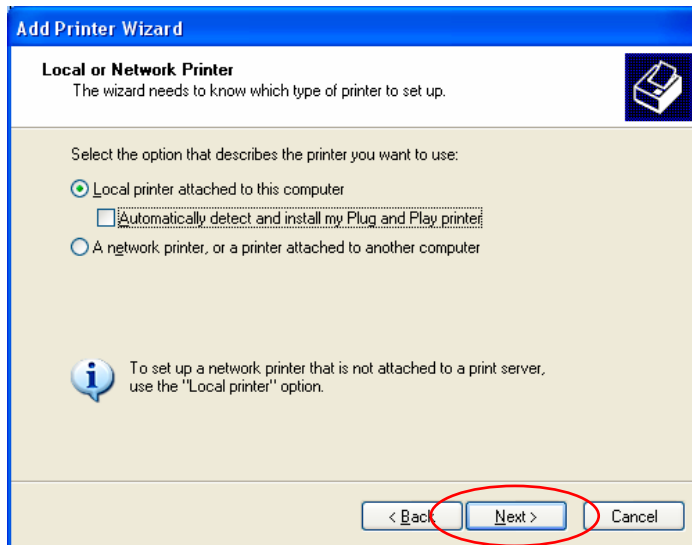
- 9) Save [Arc Plot Driver DesignJet XP.zip](#) to somewhere on your PC that you can retrieve easily (i.e. Desktop)



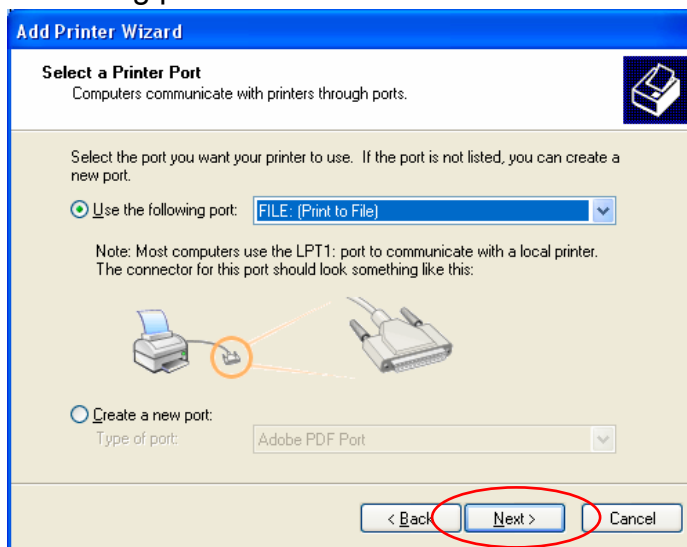
- 10) When download is complete close download dialog box, go to download location and double click the zip file: [Arc Plot Driver DesignJet XP.zip](#)
- 11) Extract all the files in the zip file into a “new folder” on your PC
- 12) Go to your “Printers and Faxes” and double click on “ADD PRINTER”
- 13) Add Printer wizard will start click “Next”



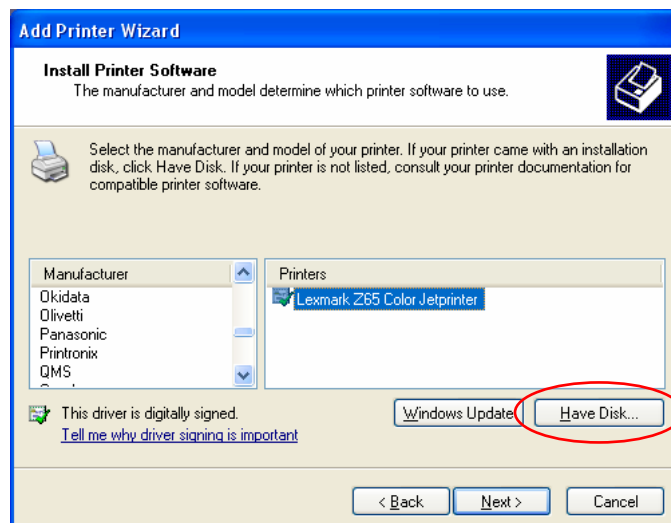
- 14) Check “local printer” and uncheck “Automatically detect and install my play plug and play printers”. Click “Next”



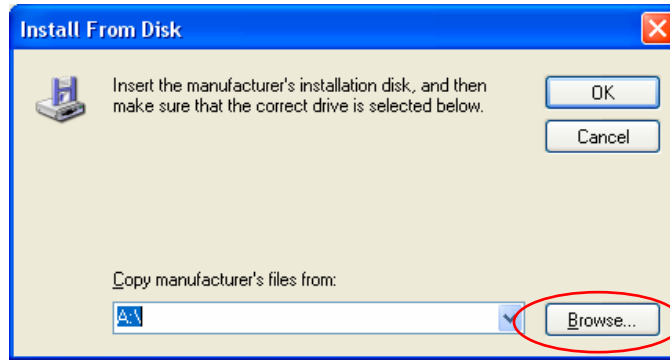
- 15) Use the following port “FILE” click “NEXT”



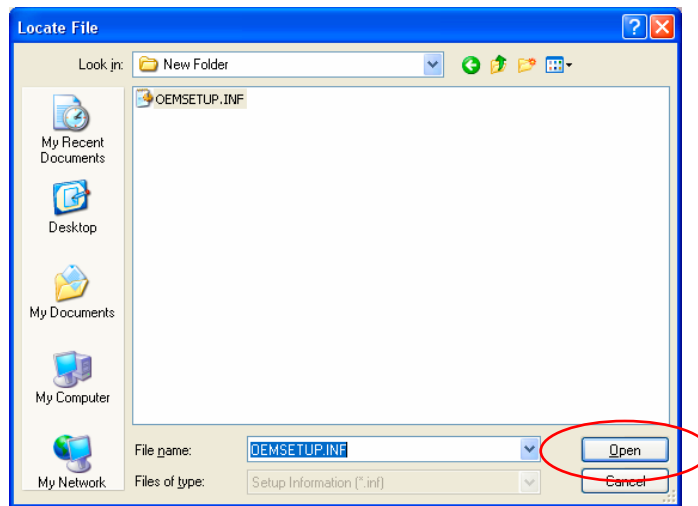
- 16) When next window pops up select “HAVE DISK”



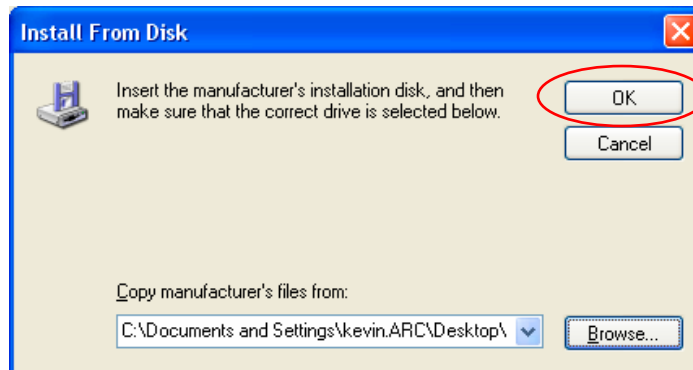
17) Browse to fold where you unzipped downloaded file



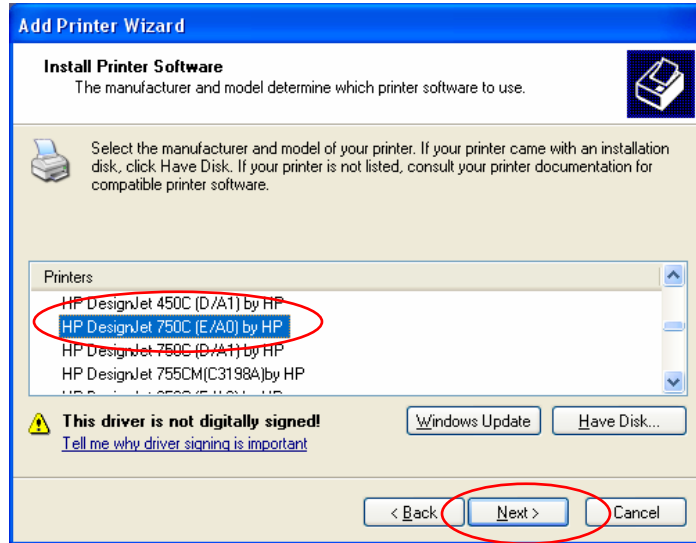
18) Select OEMSETUP.INF from folder click "OPEN"



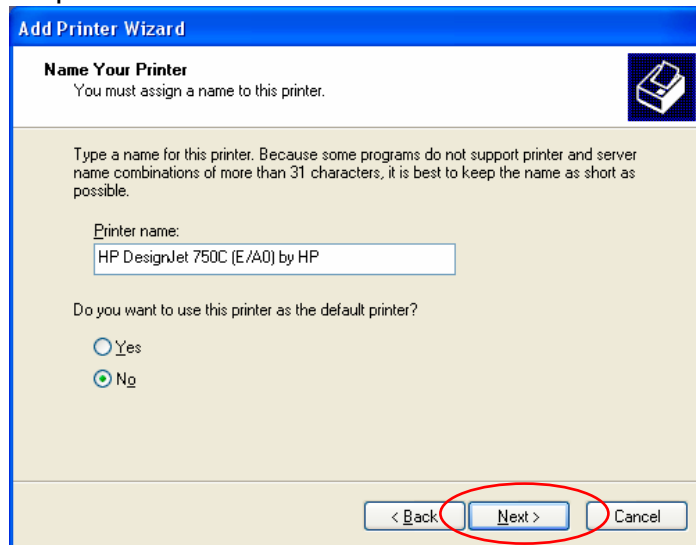
19) Then click "OK" at next screen



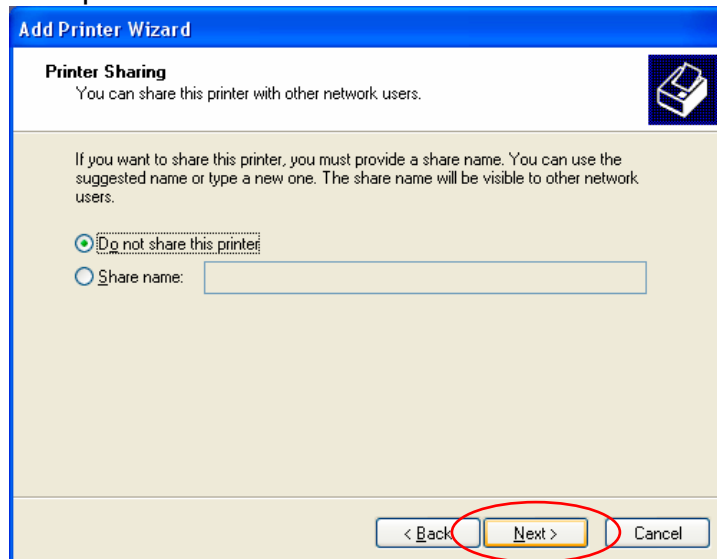
- 20) Next select the EXACT printer shown below. Click “NEXT”



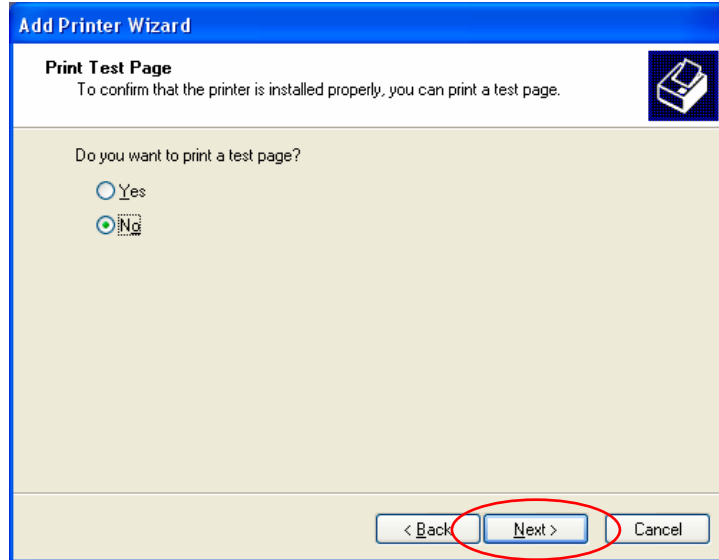
- 21) Name your printer. Click “NEXT”



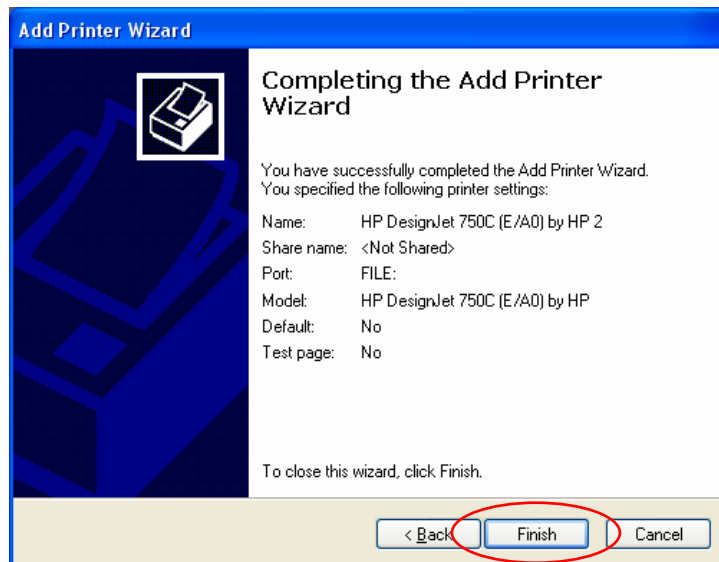
- 22) Do not share printer. Click “NEXT”



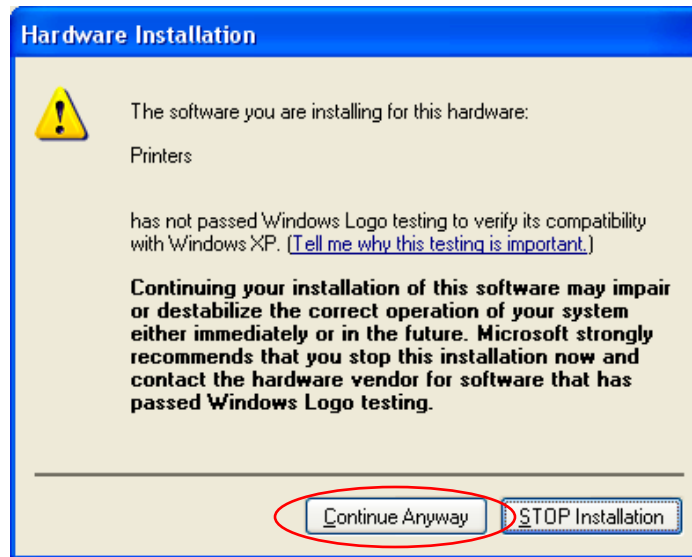
23) Do NOT print test page. Click "NEXT"



24) Click "FINISH"



- 25) Continue anyway. (This driver has been thoroughly tested)



- 26) Printer should now appear with your other printers as below:

